

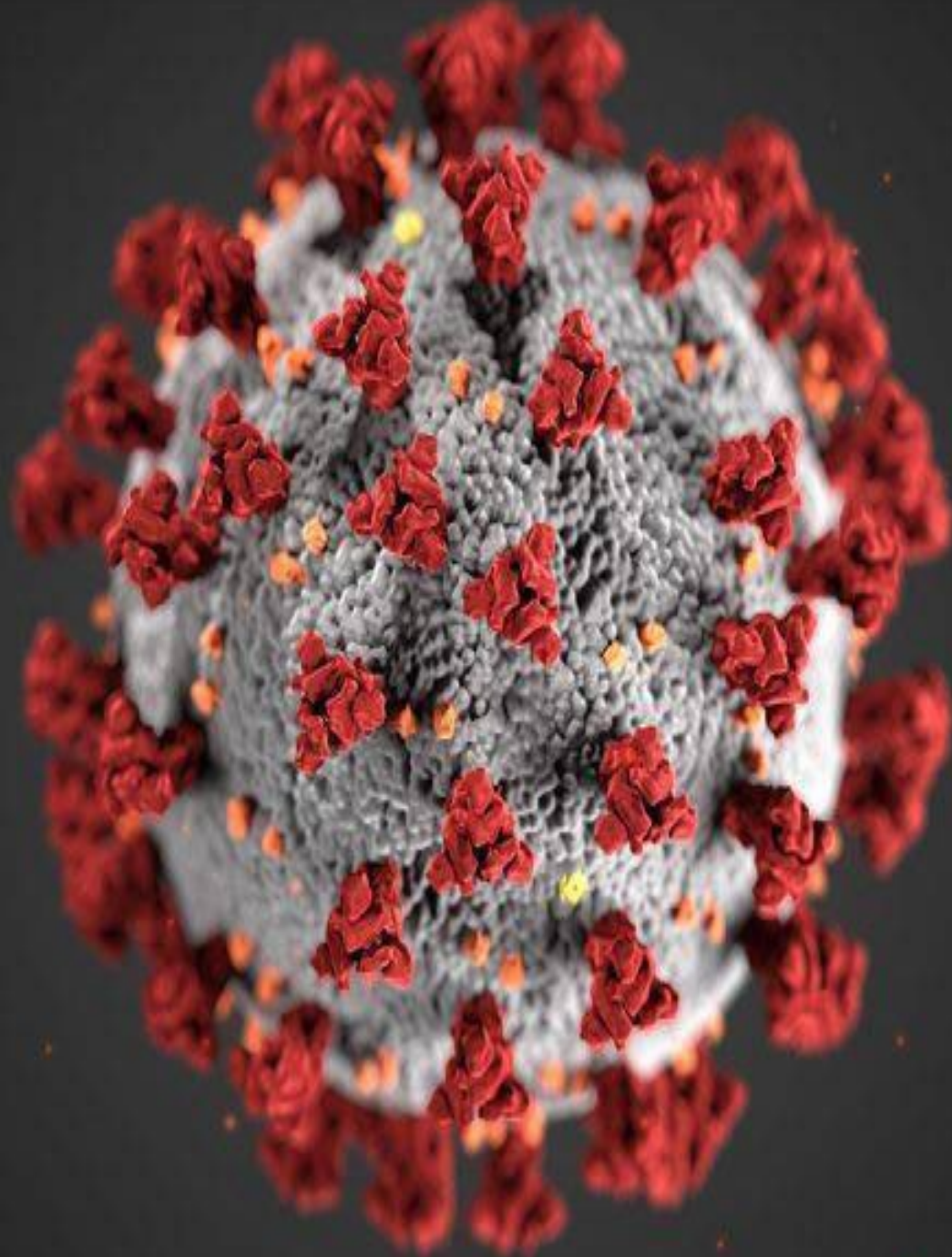
STATE OF HEALTHCARE POST-COVID

Isis Montalvo, MBA, MS, RN, CPHQ



Objectives

- Identify healthcare responses to the COVID-19 pandemic
- Recognize key healthcare aspects post-pandemic





Innovation & Resilience



Hospitals



- Designated boarding locations separate from Emergency Rooms
- Pandemic post-traumatic stress
- Huddles adding wellness & word of the day
- Managing increased violence from patients

Alternative Care Settings

- Acute Care at Home
- Paramedicine
- Acute care services in post-acute for specific need



Workforce



- Tide turning with the “Great Resignation”
- Predictive Models for Staffing
- Paraprofessional Growth
- Virtual Nursing
- Greater autonomy in workhours while meeting needs

Workforce (cont.)



- Early recruitment
- Federal / State funding
 - State Apprenticeship Expansion, Equity, and Innovation Grants (SAEEI)
 - Apprenticeship models
- Addressing non-medical drivers of health
- Mental Health

Mental Health (MH)

- Increase in prevalence or aggravation of pre-existing mental disorders
- MH Prescriptions rose by 12% in 2022 vs. 2019
- Anxiety or depression double that of pre-pandemic
- Telepsychiatry
- 988 – National Suicide & Crisis Lifeline



Mobile Health



- Telehealth
- Remote monitoring
- Non-invasive labs
- Expansion of wearables



Integrative Health



- Addressing non-medical drivers of health (social determinants)
- Alternative medicine
- Connecting community and members

Genomics

- Genetic test to predict susceptibility to disease
- Genome awareness for targeted treatment
- Previous RNA work led to COVID-19 Vaccine
- Human Genome Project



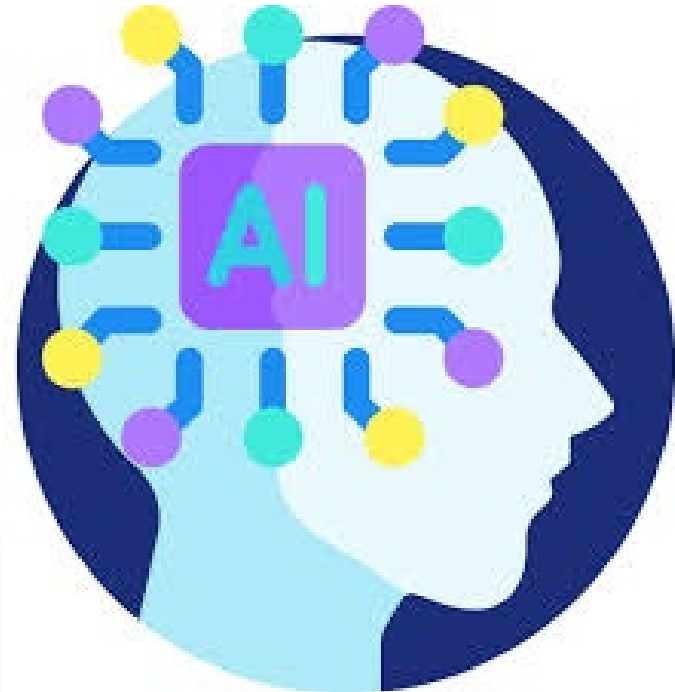
Supply Chain



- Reusing Health Care Textiles for Personal Protective Equipment
- Community opportunity beyond hospital/post-acute
- Robotic Deliveries

Augmented Intelligence

- Types
 - Machine Learning
 - Deep Learning
 - Generative AI
 - GPT-4
- Predictive analytics to identify needs
 - Staffing
 - Supplies



Augmented Intelligence (cont)

- Health Examples
 - Estimation of heart blood flow
 - Eye imaging
 - Blood stream infections
 - Drafting provider notes
 - Summarizing patient information
 - Creating ambient notes
- Many more to come



*If we don't change, we don't
grow. If we don't grow, we aren't
really living.*

Gail Sheehy

QUESTIONS?

Isis Montalvo, MBA, MS, RN, CPHQ

Principal Consultant

(657) 279-4048

imontalvo@healthmanagement.com

www.healthmanagement.com



References

- American Organization for Nursing Leadership (AONL) 2024 Conference Presentations
- Cutler, D (2023) Health System Change in the Wake of COVID-19 *JAMA Health Forum*. 2023;4(101):e234355
- Daffara, P (2020) Applying the Futures Wheel and Macrohistory to the COVID19 Global Pandemic. *Journal of Futures Studies* 2020;243(2):35-48.
- Howell, M., Corrado, G. & DeSalvo, K. (2024) Three Epochs of Artificial Intelligence in Health Care. *Journal of American Medical Association*, 2024 Jan 16;331(3):242-244.
- Kuznar, W. (2020) Preparing for Healthcare After COVID-19: New Challenges Facing Payers. *American Health & Drug Benefits* 2020;13(3):123-124
- Jacobs, B. (2024) [Expanding Home Care Value through Innovative Client and Caregiving Supports](#). *Health Management Associates*, February 6, 2024.
- National Academies of Sciences, Engineering, and Medicine, March 4-5, 2024 [Reusable Health Care Textiles for Personal Protective Equipment: A Workshop](#)
- National Institute of Health, National Human Genome Research Institute. <https://www.genome.gov/> Accessed April 19, 2024.
- Niaz, M., & Nwagwu, U. (2023) Managing Healthcare Product Demand Effectively in the Post-COVID-19 Environment: Navigating Demand Variability and Forecasting Complexities. *AJEMB August 2023*;2(8):316-330.
- Post University Blog (2023) The Pandemic's Impact on the Healthcare Sector: Unpacking the Latest Challenges and Opportunities in U.S. Healthcare. *Career Insights, Nursing*
- Rosser, J. (2020) The COVID-19 Crisis and Its Impact on the Future of Healthcare. *JSLS, Journal of the Society of Laparoscopic & Robotic Surgeons July-September 2020*;24(3):32020.00039
- U.S. Department of Health and Human Services (2022) [Impact of the COVID-19 Pandemic on the Hospital and Outpatient Clinical Workforce](#). Assistant Secretary for Planning and Evaluation, Office of Health Policy (ASPE), Issue Brief, May 2022.
- US Today (2024) [Mental health crisis fuels the post-pandemic rise in medication use](#), Updated March 3, 2024. Accessed April 22, 2024.