

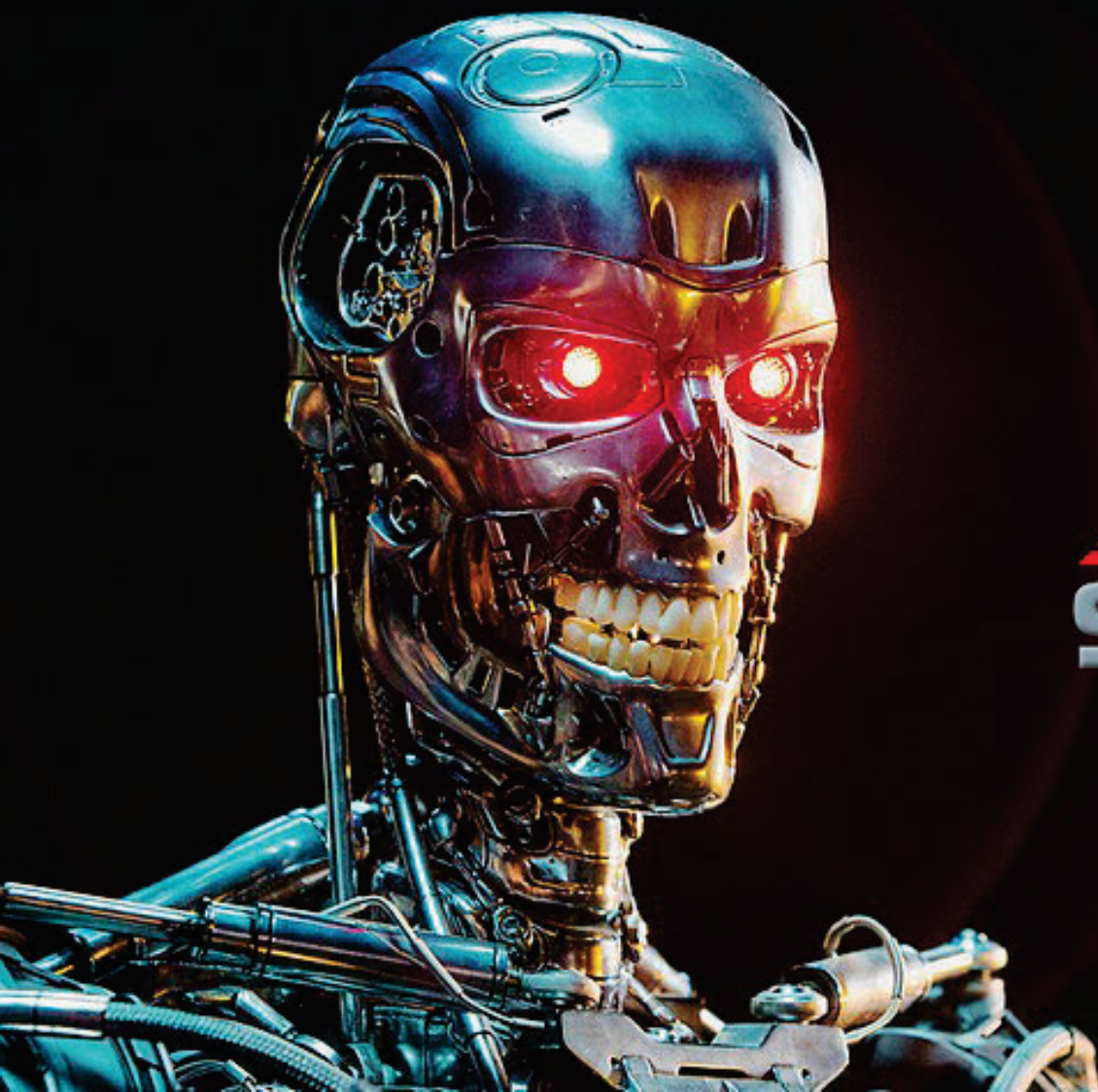
Navigating *the* Future



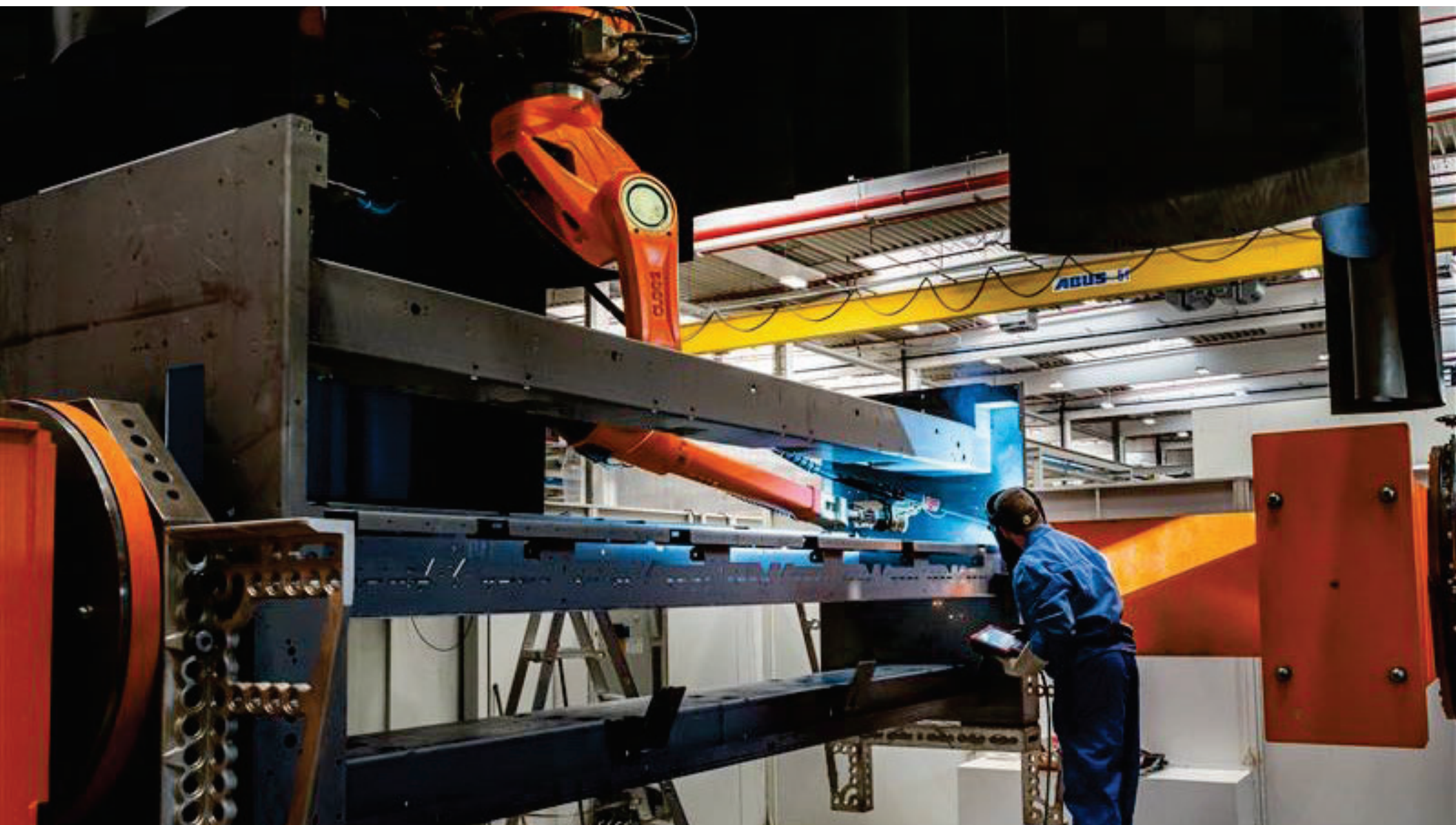
Kannegiesser®
ETECH

with **Robotics** and **AI**









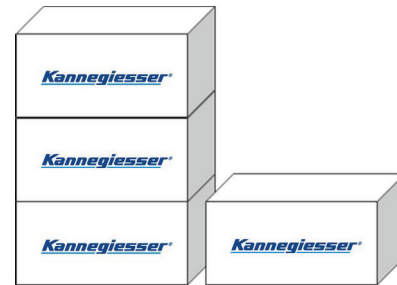




Robots



designed by freepik.com



Industrial application



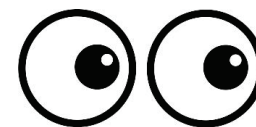
Laundry

| | | | | |
|-----------|--|---------|---|---|
| What? | Identification by size, shape, surface | Pick up | ✓ | ✗ |
| Where? | Defined position | Collect | ✓ | ✗ |
| Where to? | Assigned location, target | Bring | ✓ | ✓ |



What is the person doing?

(1) Detect



(2) Identify



(3) Pick up



What makes the linen special?

What?

"Flexible Items"

- In different sizes
- Different thicknesses
- Old and new parts
- Different textiles
- Variable mixtures
- Dry or wet

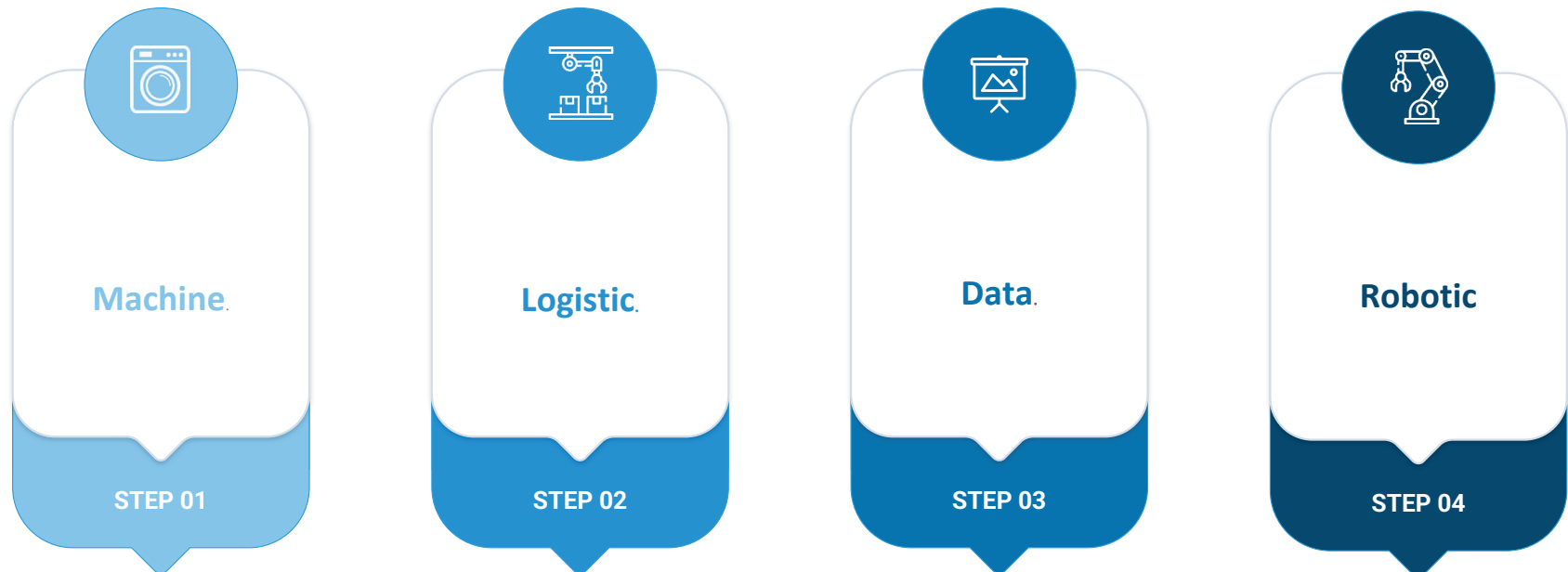
Where?

"Lies chaotic and always different"

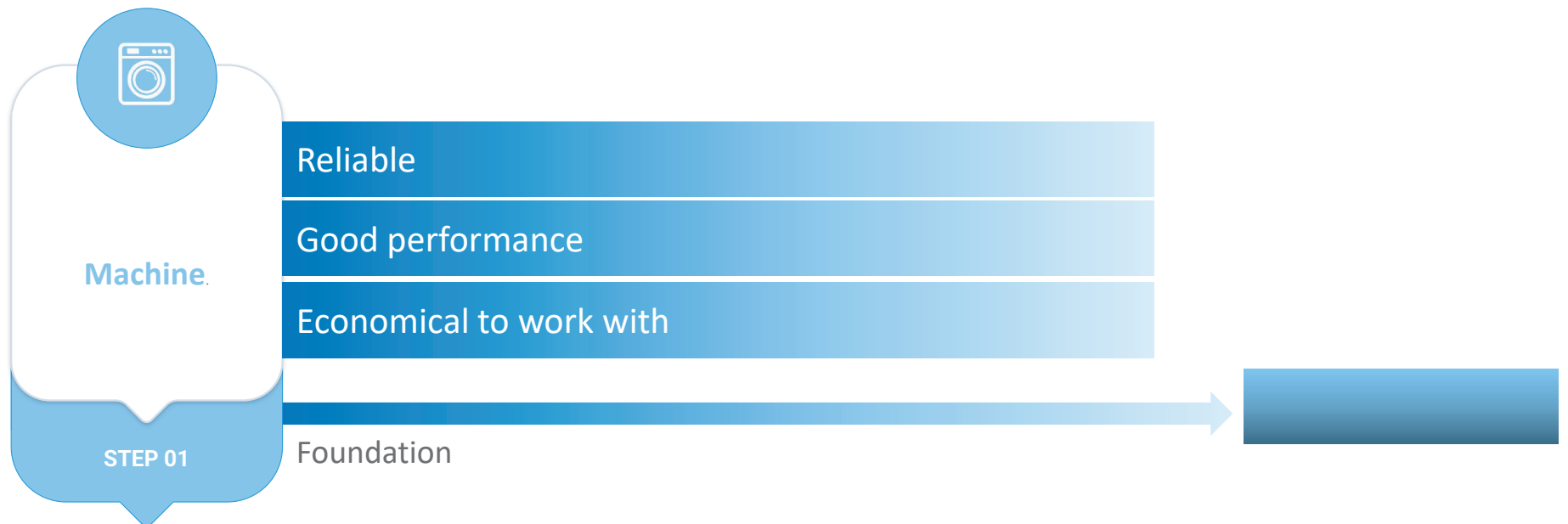
To have the *right linen*,
at the *right time*,
reliably,
and with *minimal effort*,
at the *right customer*.

GOAL

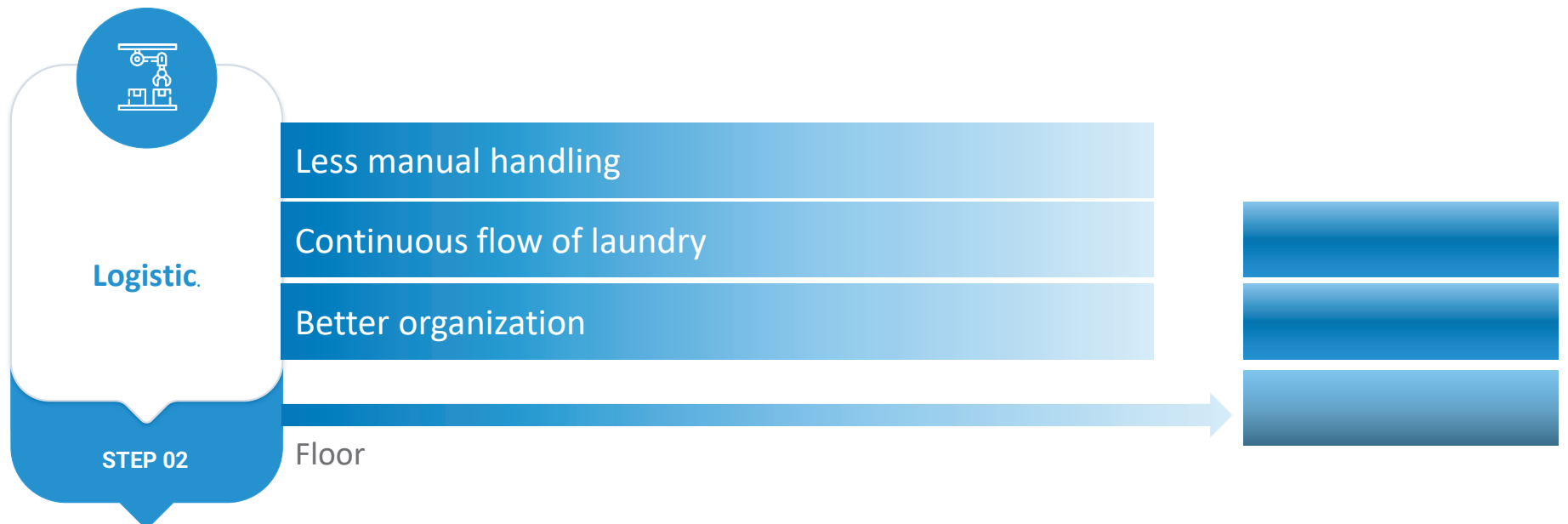
STEPS OF AUTOMATION



“FOUNDATION” – THE MACHINE



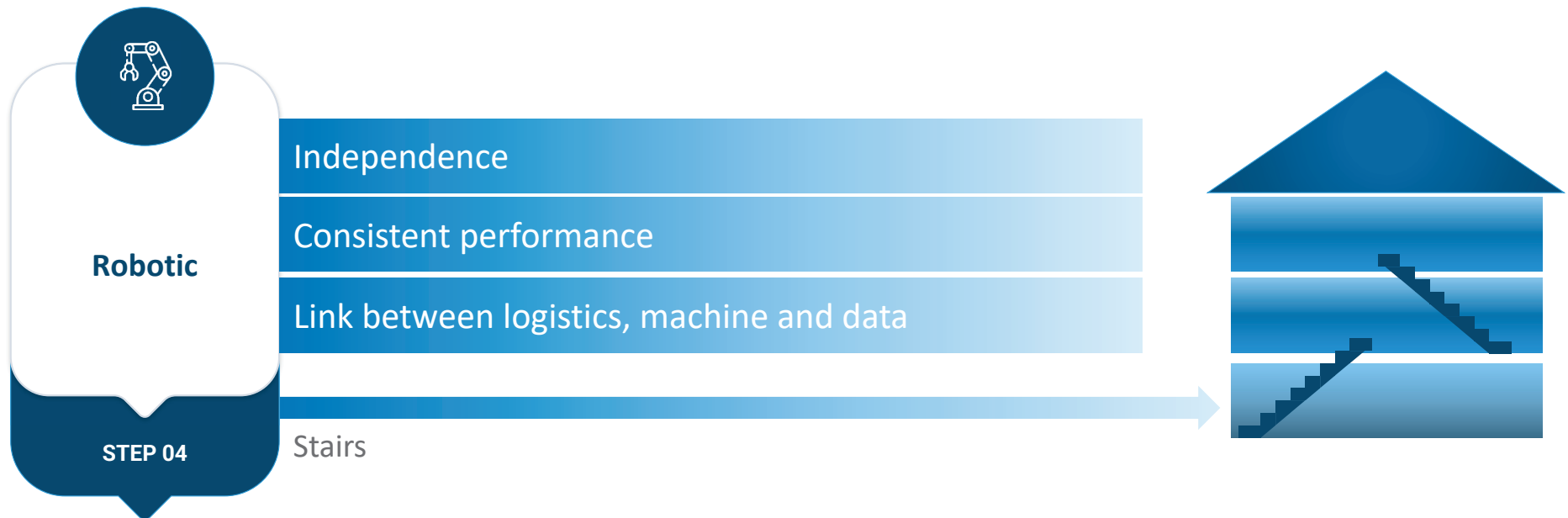
“FLOOR” – THE LOGISTICS



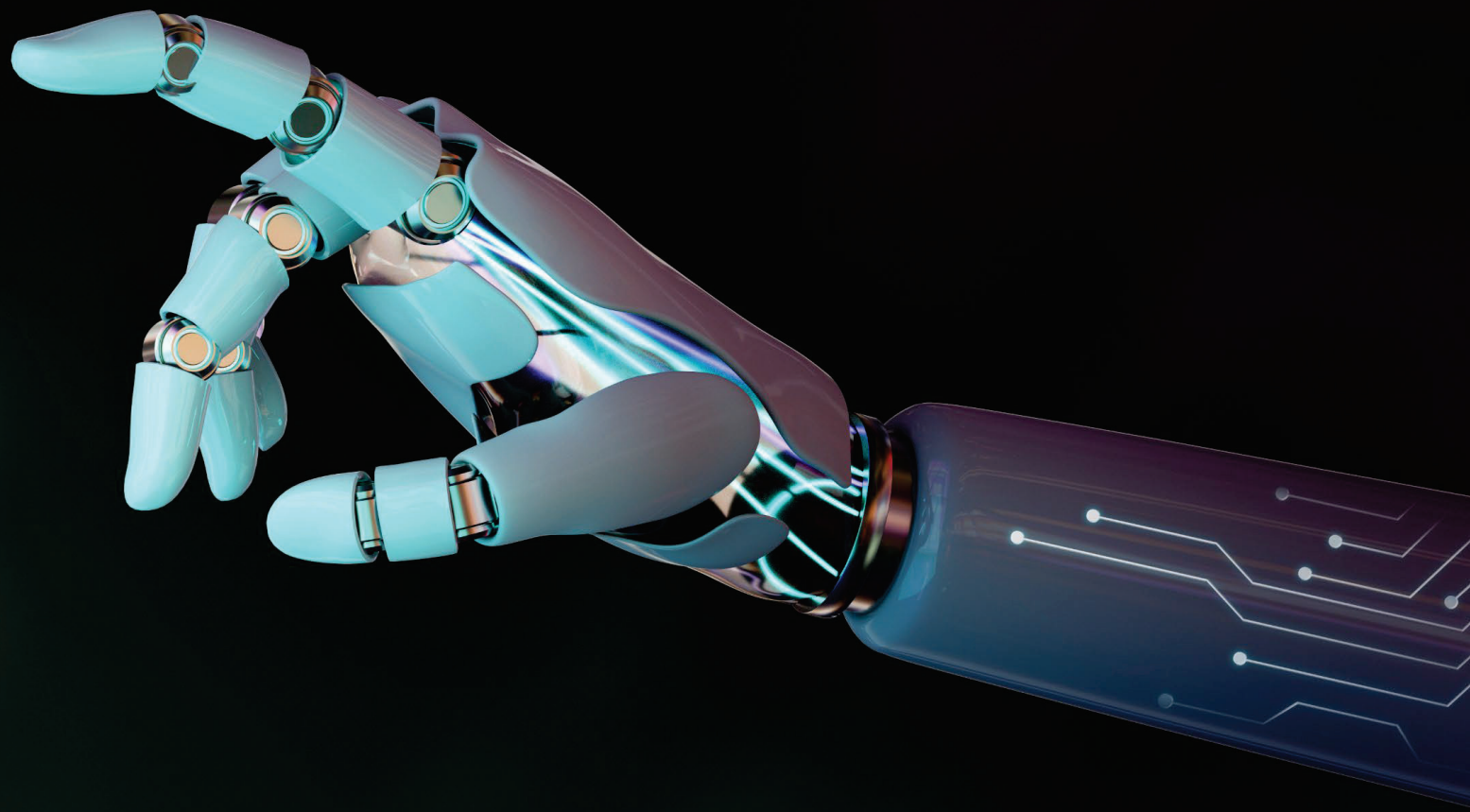
“ROOF” - THE DATA



"STAIRS" - ROBOTICS

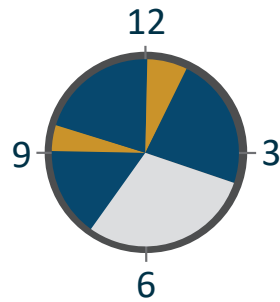


How can automation and robotics support this?



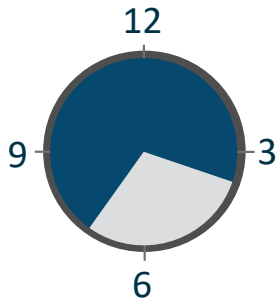
MORE PRODUCTION TIME

manual



Breaks / pauses

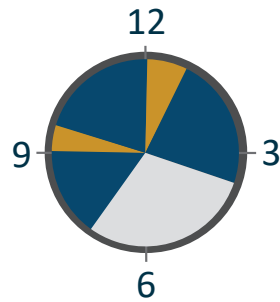
robot



15% more production time

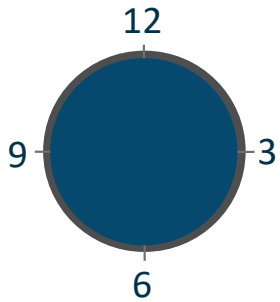
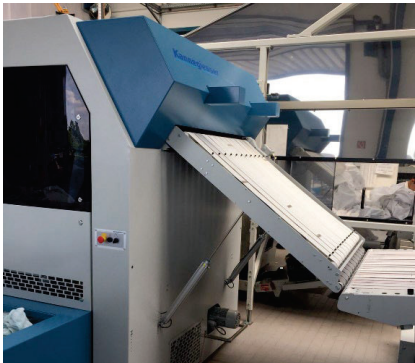
FLEXIBLE PRODUCTION TIME

manual



Shift operation

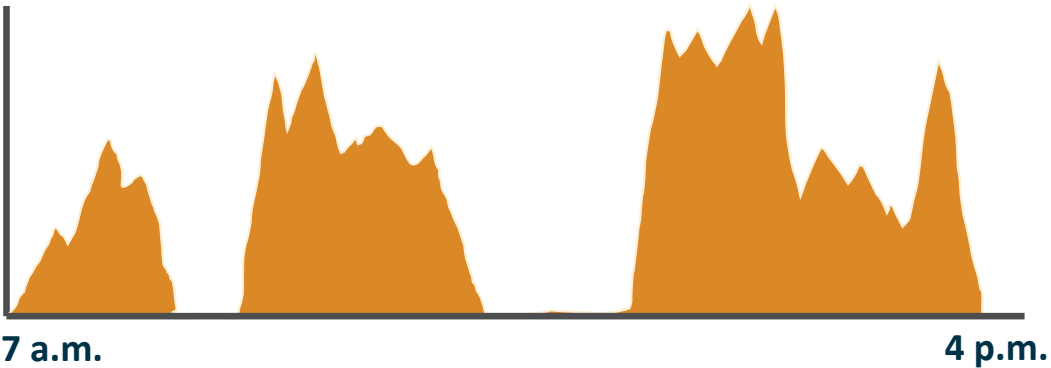
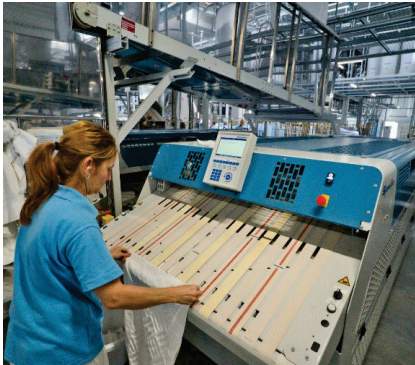
robot



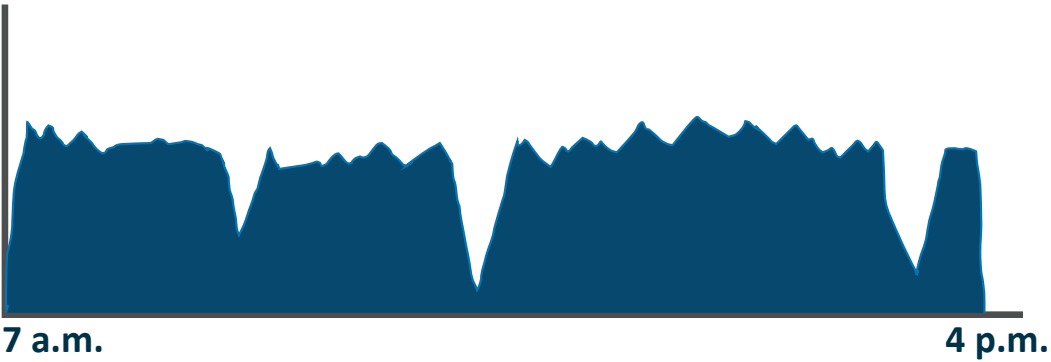
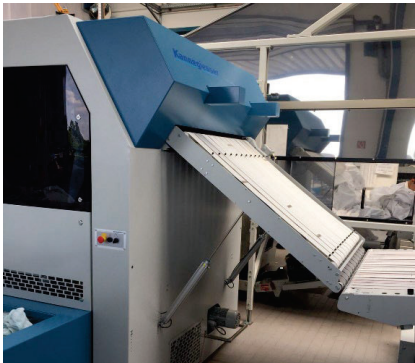
Multi-shift operation

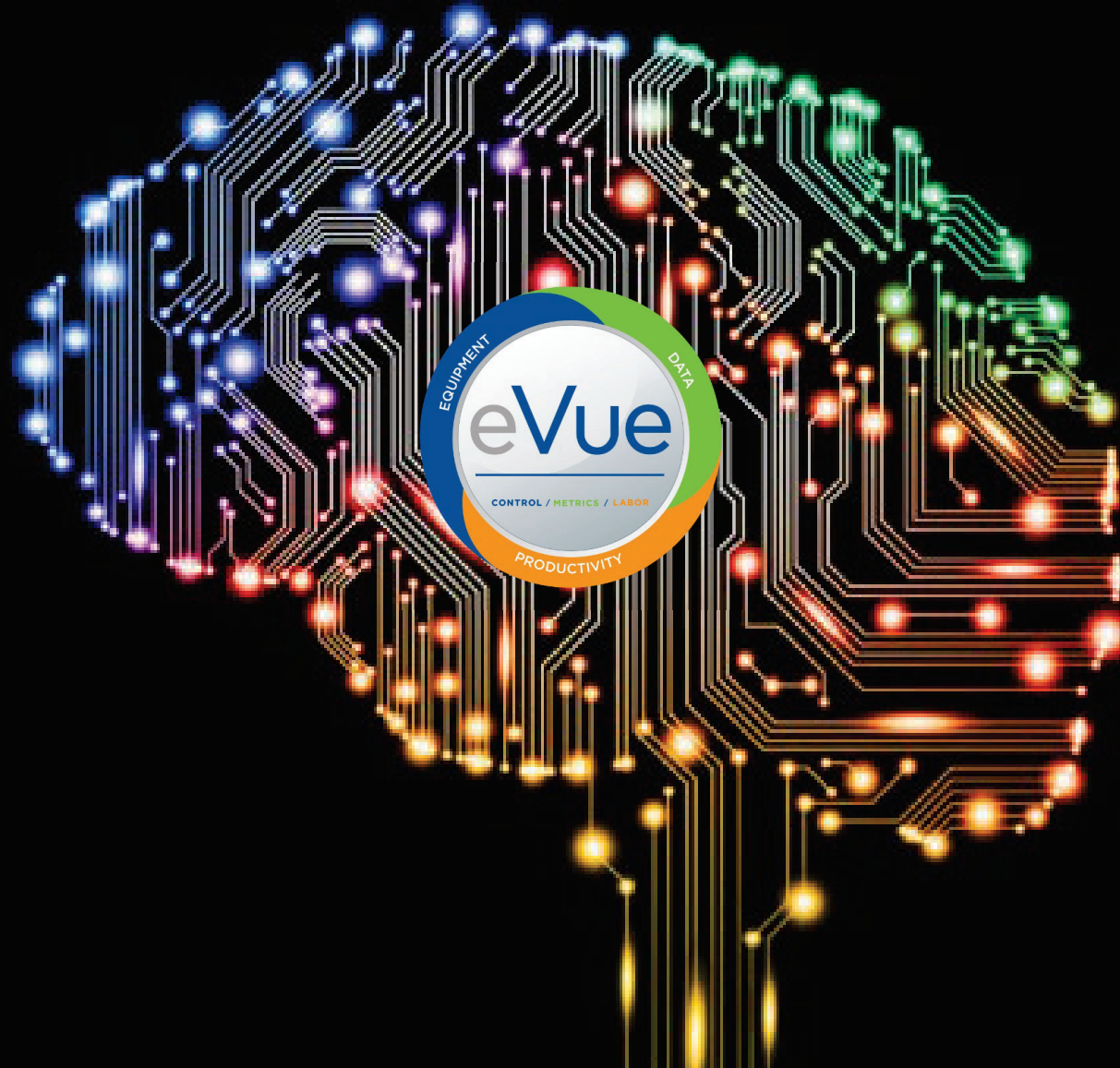
STEADINESS

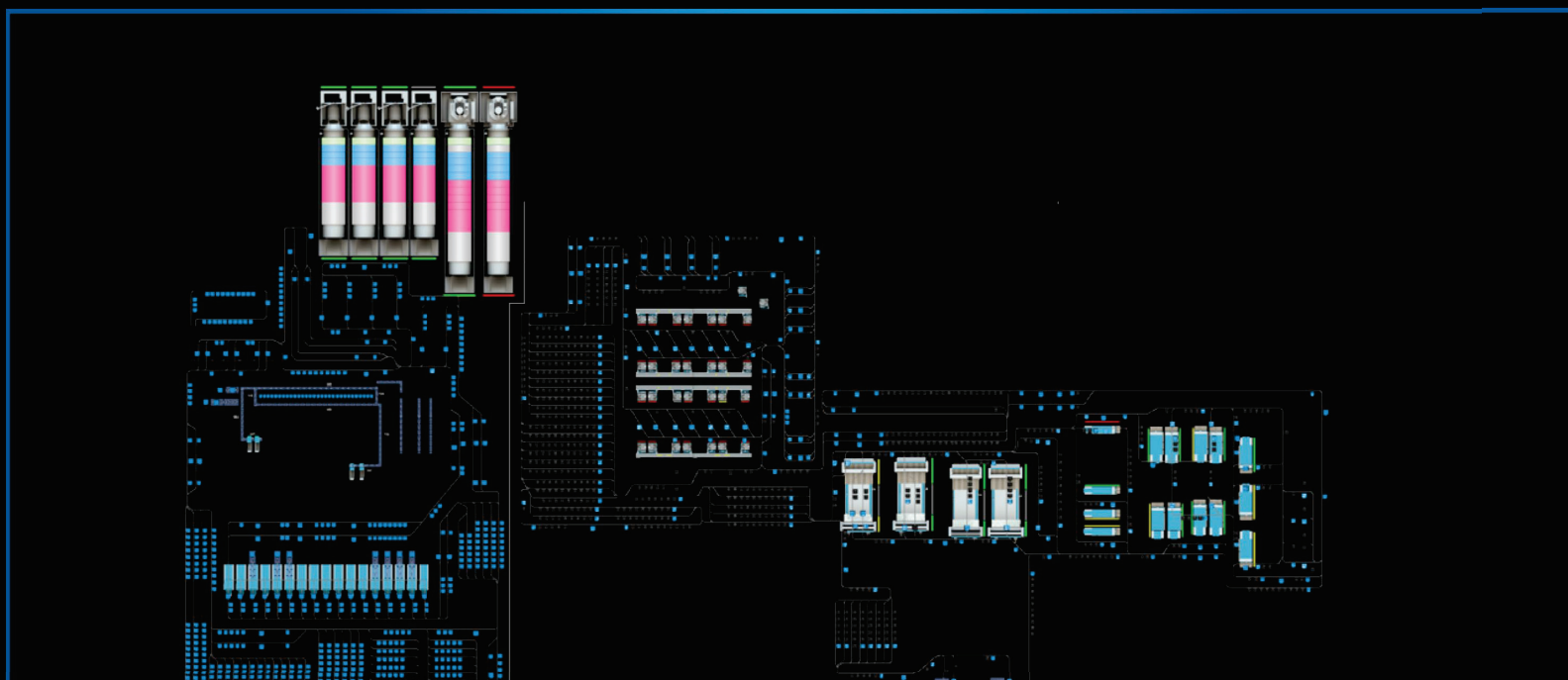
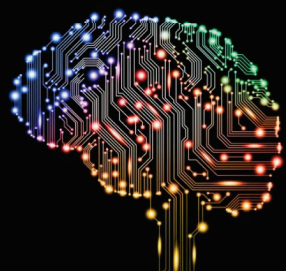
manual

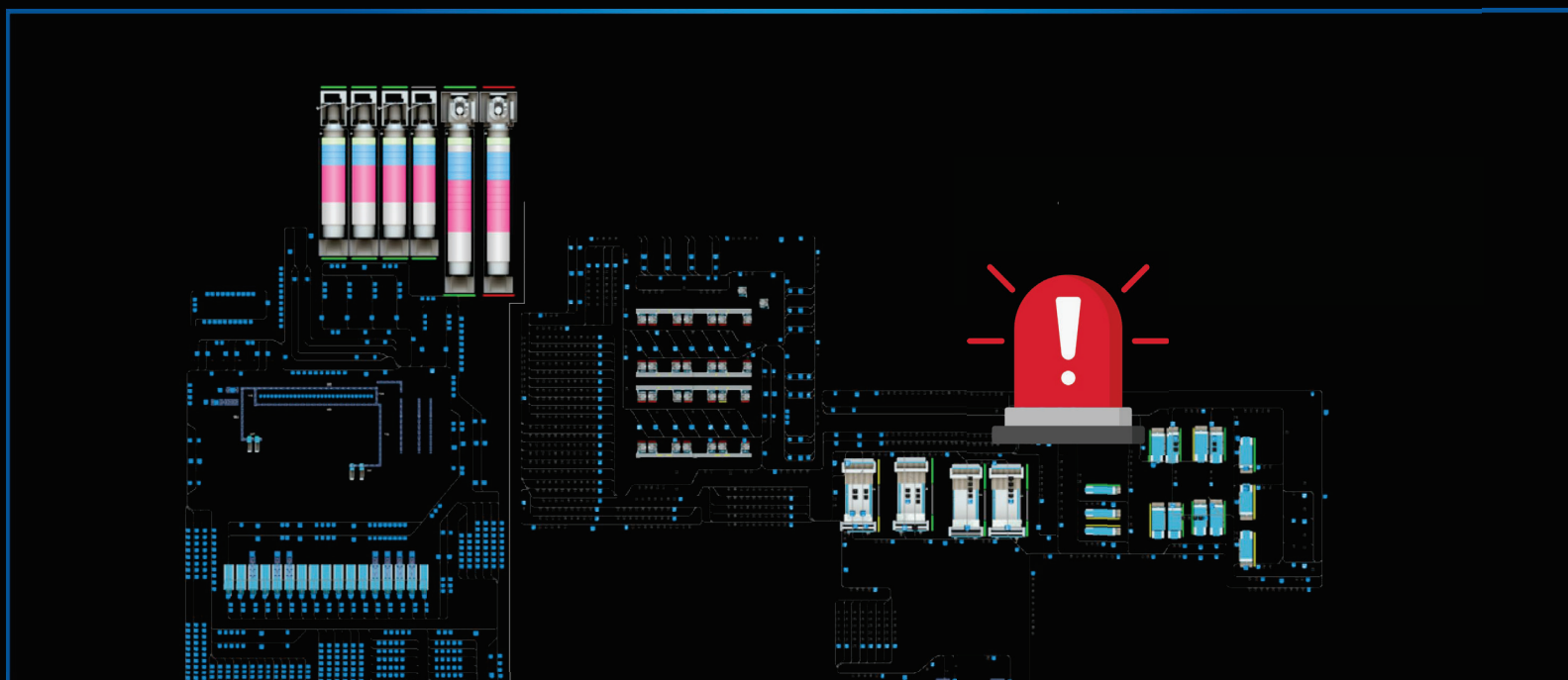
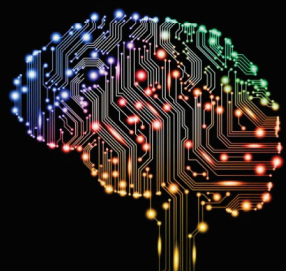


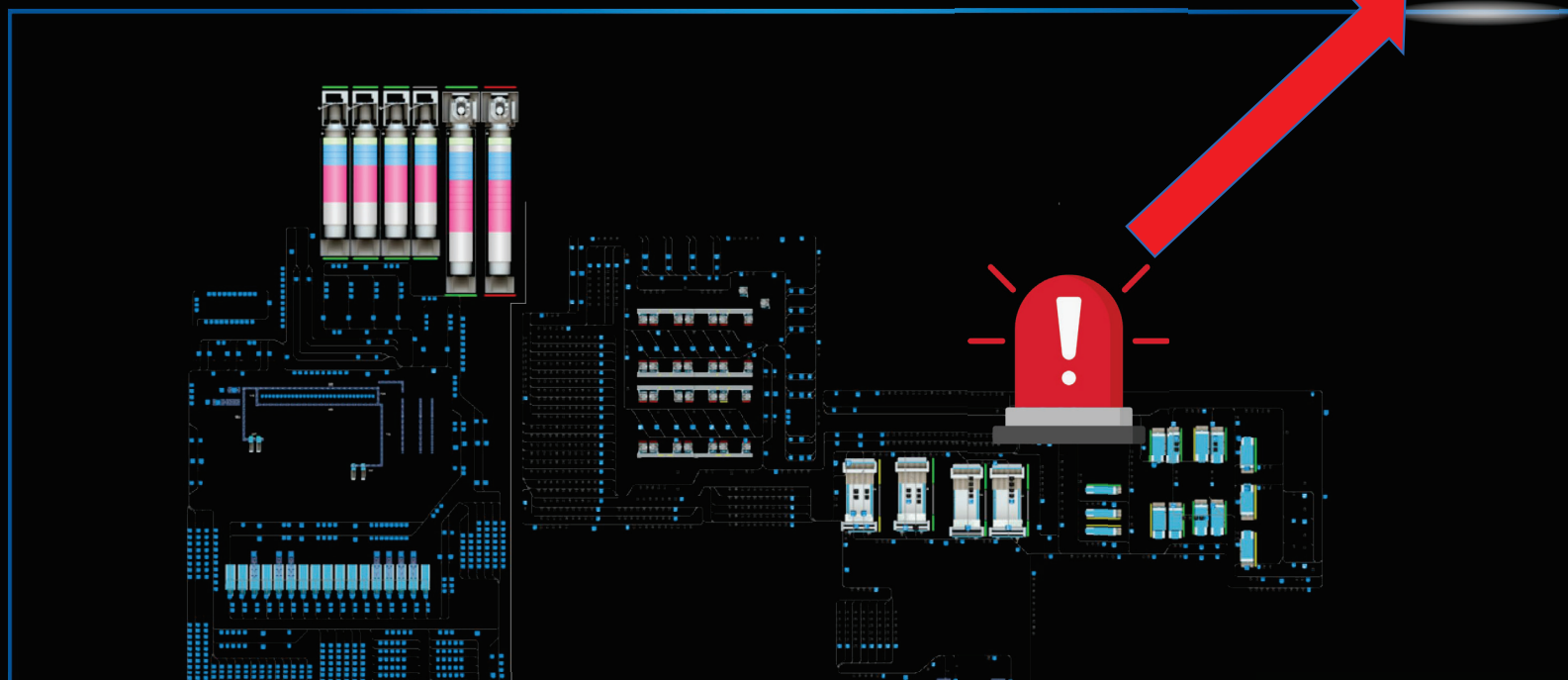
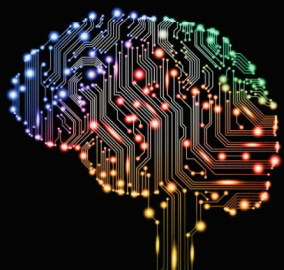
robot

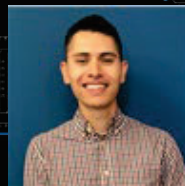
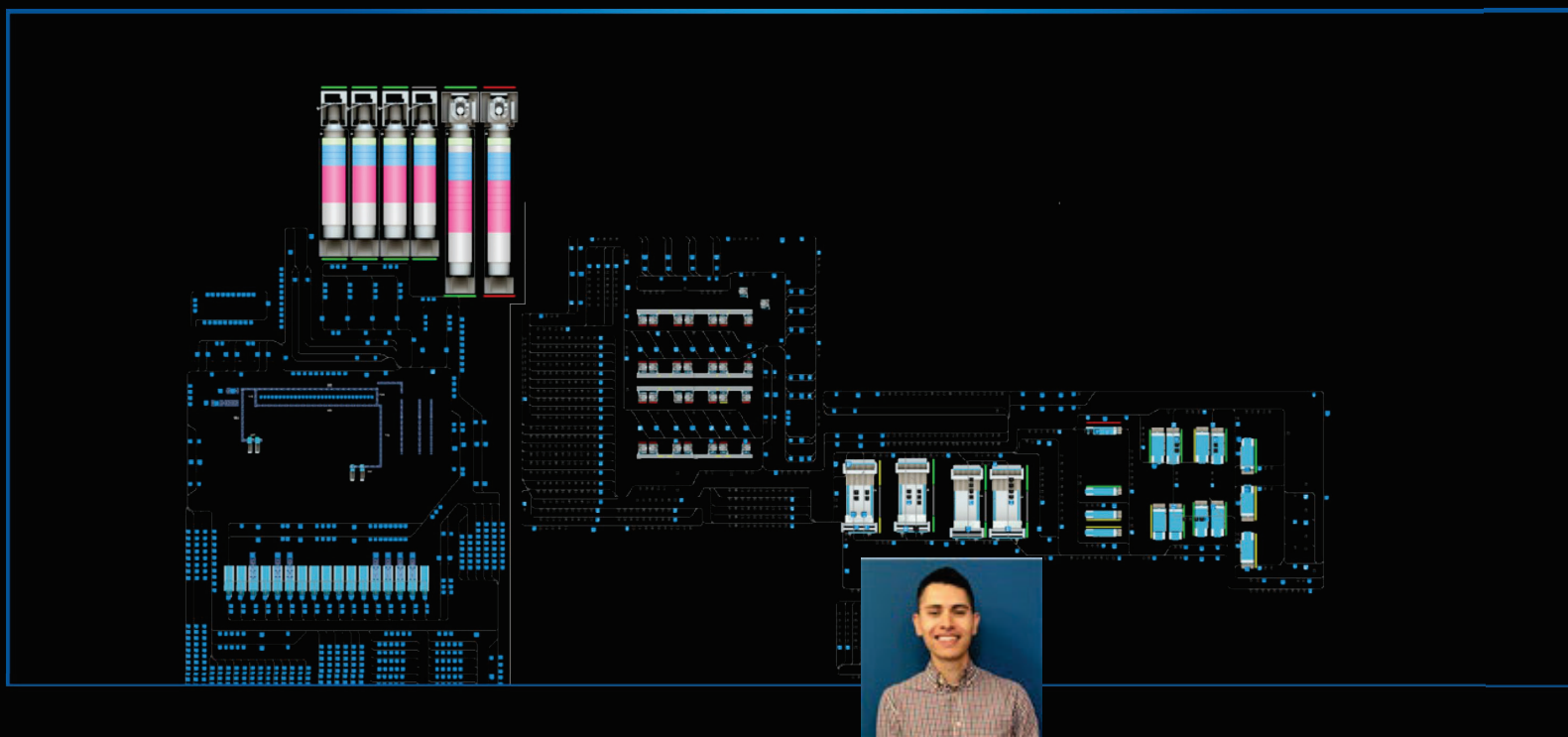
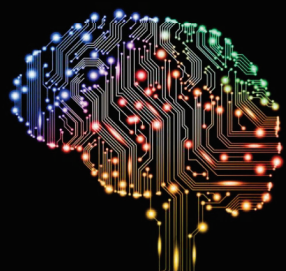


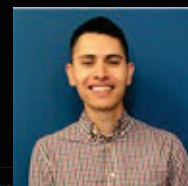
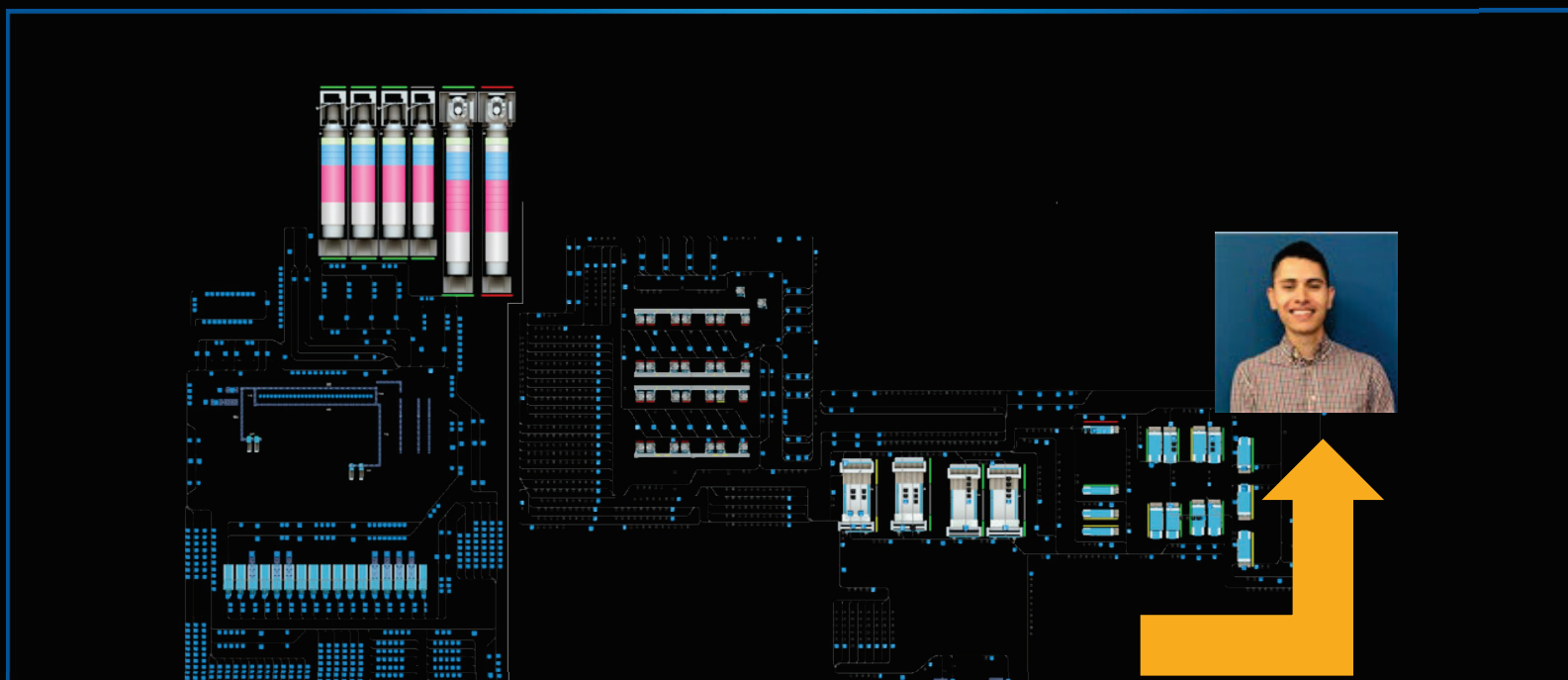
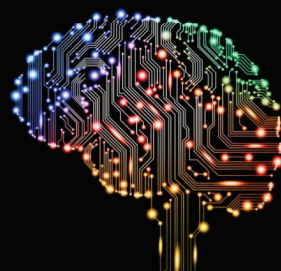


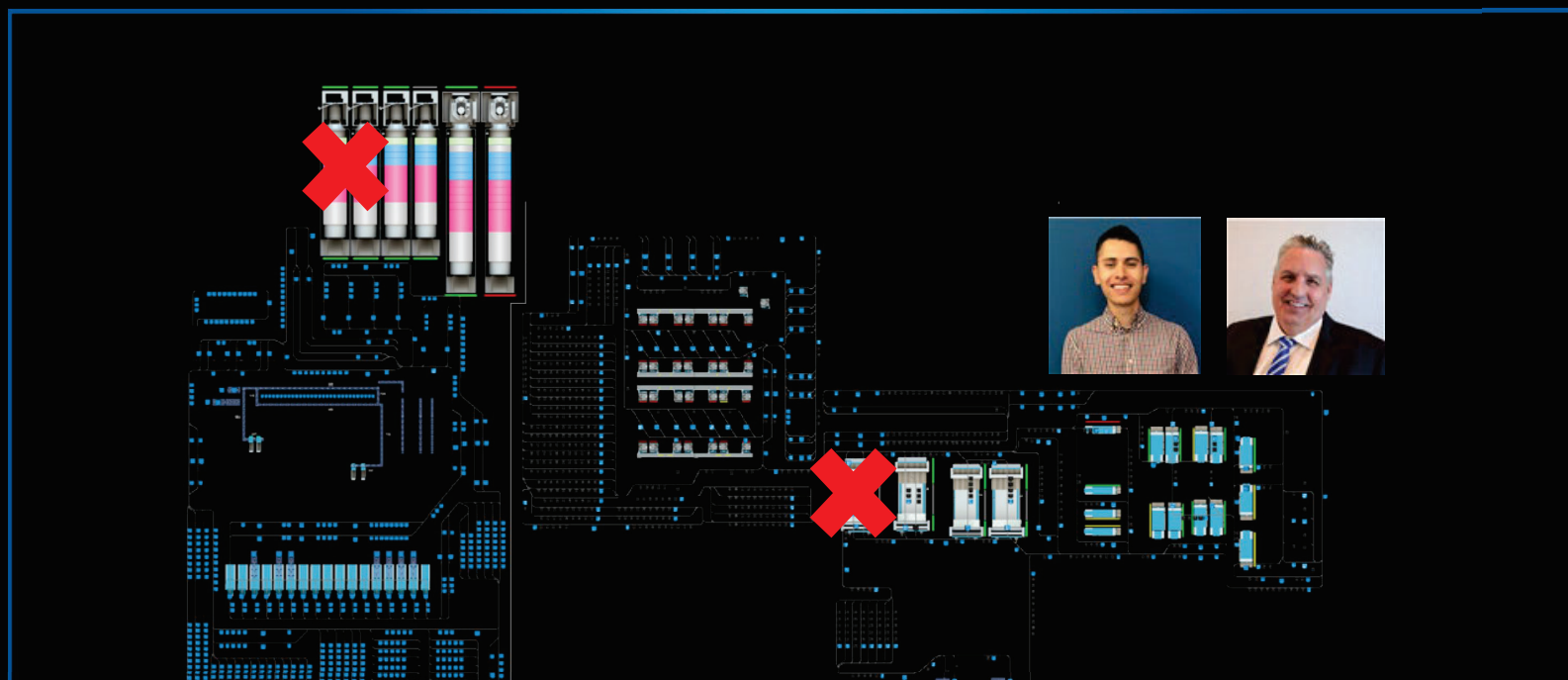
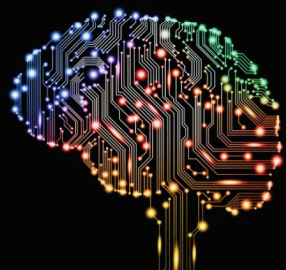


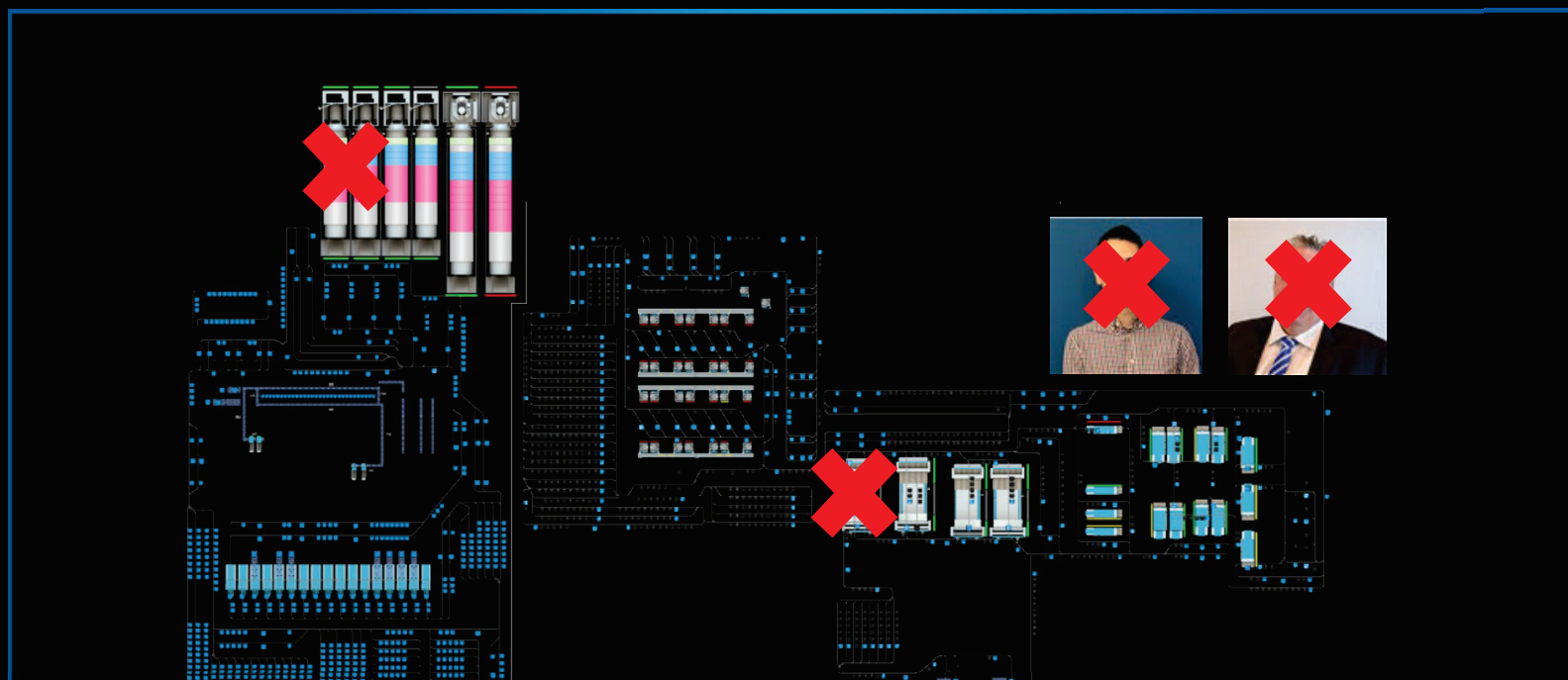
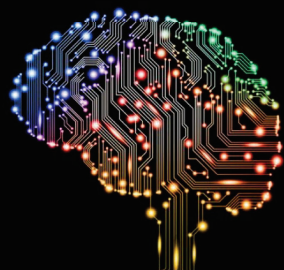


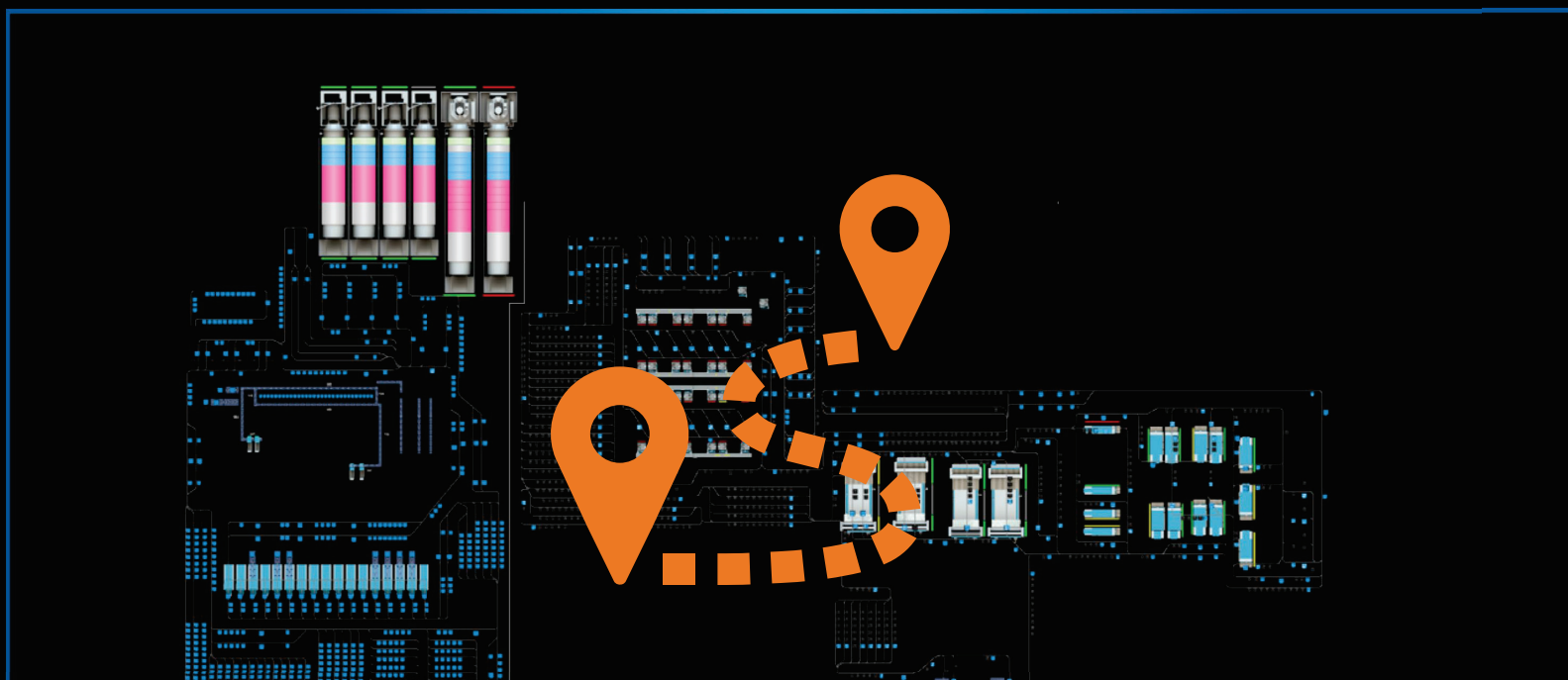
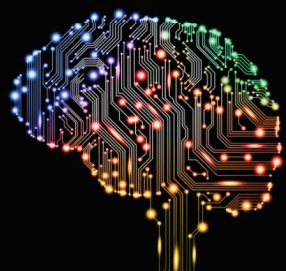








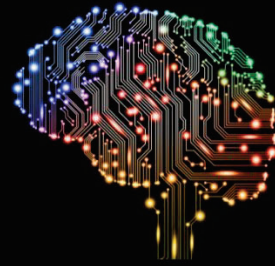








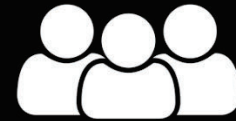




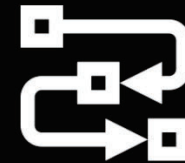
Maximize Equipment



Maximize People



Maximize Production Flow



XFM 2

**XFM**
ID: 80257164



| | |
|--|--|
|  <div>12h 26m PRODUCTION</div> |  <div>5h 43m FAILURE</div> |
|  <div>0h 00m LINE RESTRAINT</div> |  <div>1h 00m WAITING</div> |


Pieces

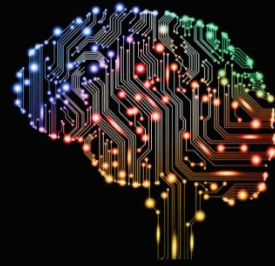
11,002

Messages

- 

Light barrier (B29) obstructed Infeed cross folding Item stopped too late

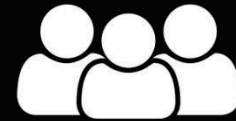
XFM | 80257164
- March 18, 2024 7:10 PM



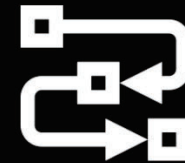
Maximize Equipment



Maximize People



Maximize Production Flow



People of a laundry

Operator



eVue
LABOR

Maintenance



eVue
CONTROL



Production



eVue
METRICS

eVue
Anywhere

Director



eVue
Anywhere

People of a laundry

Operator

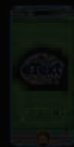


eVue
LABOR

Maintenance



eVue
MAINTENANCE



Production



eVue
METRICS

Director



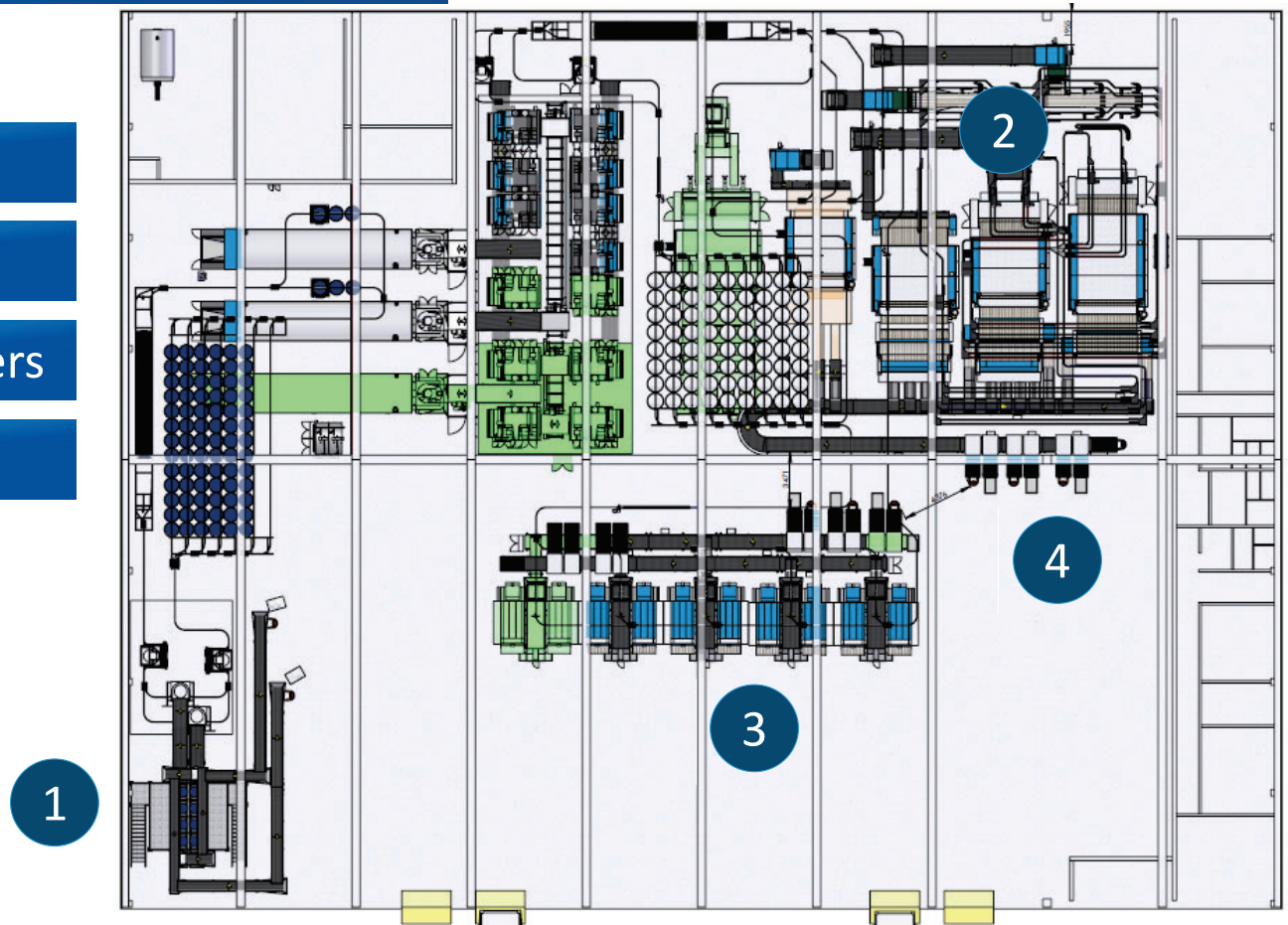
Areas with the most staff in the laundry

(1) Soiled linen sorting

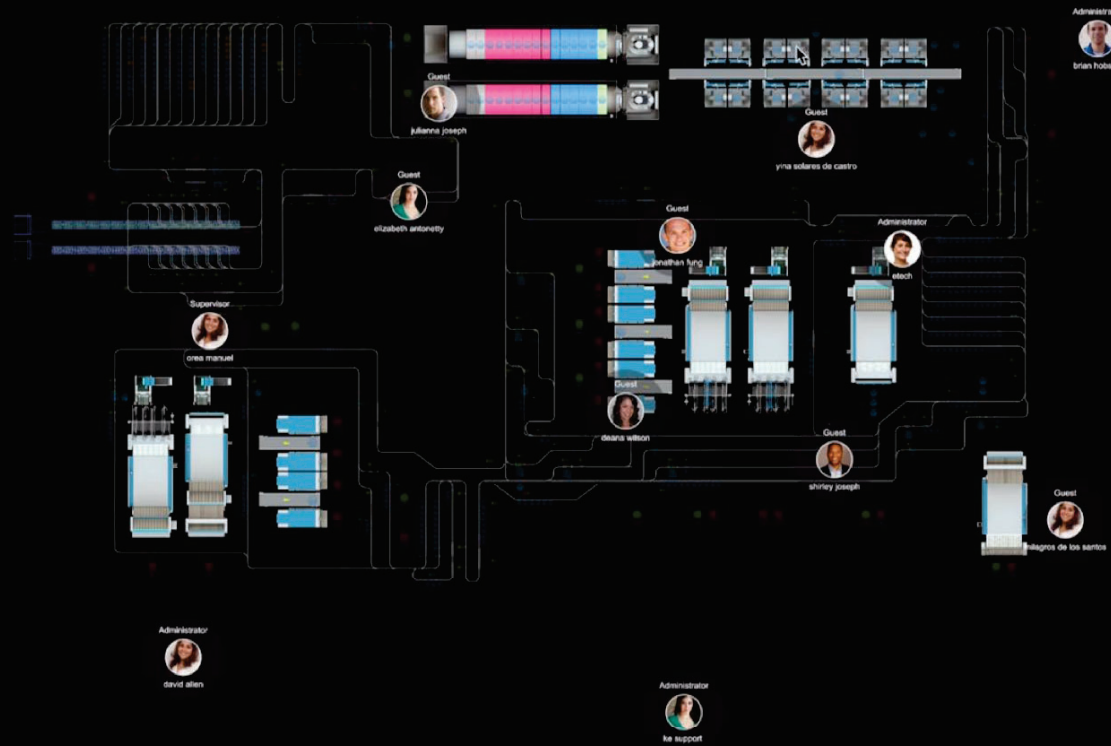
(2) In front of the ironer lines

(3) In front of the dry work folders

(4) Stack handling and dispatch



- IO Forced**
- Storage Rail 9**
Bag Stuck
- Sort Station 11**
Bag Stuck
- Pre Storage 9**
Bag Not in Sensor
- Pre Destination 1**
Bag Unexpected
- Clean Maintenance Lift**
Bag Not in Sensor



| | | | | | |
|--|--------------|-----------------|-----------|-----------|------|
|  | Derek Hanson | Ironer 1 Lane 1 | OR sheets | 349 / 340 | 103% |
|  | Emily Drolet | Ironer 1 Lane 2 | OR sheets | 241 / 340 | 71% |


eVue 8:13 AM Ironer 1 167 (18.6)




Jammed



No work



Call Maintenance



People of a laundry

Operator



eView
LABOR

Maintenance



eVue
CONTROL



Production



eView
METRICS

Director



People of a laundry

Operator



eText
LABOR

Maintenance



eText
EQUIPMENT



Production



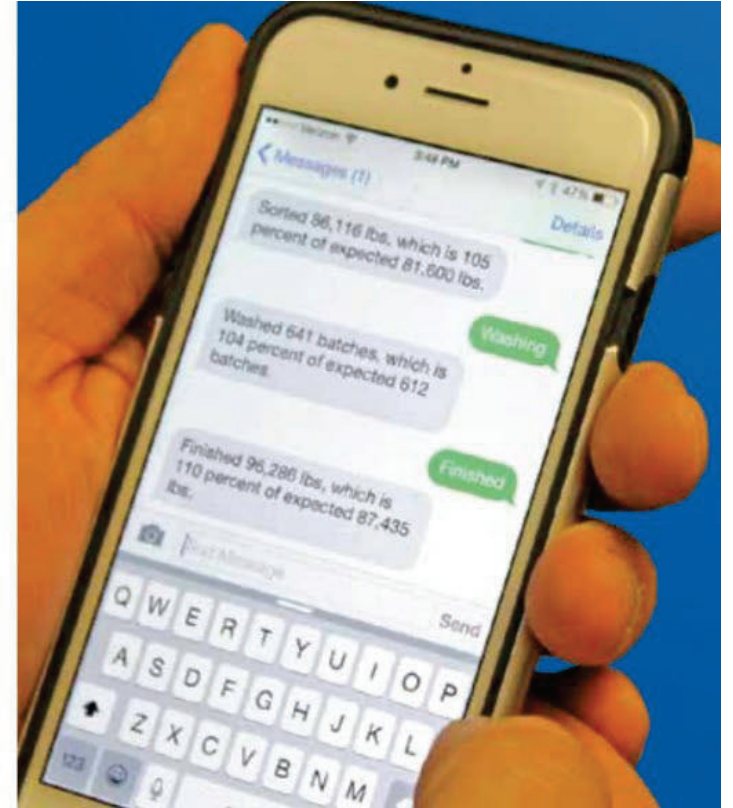
eVue
METRICS

eVue
Anywhere

Director

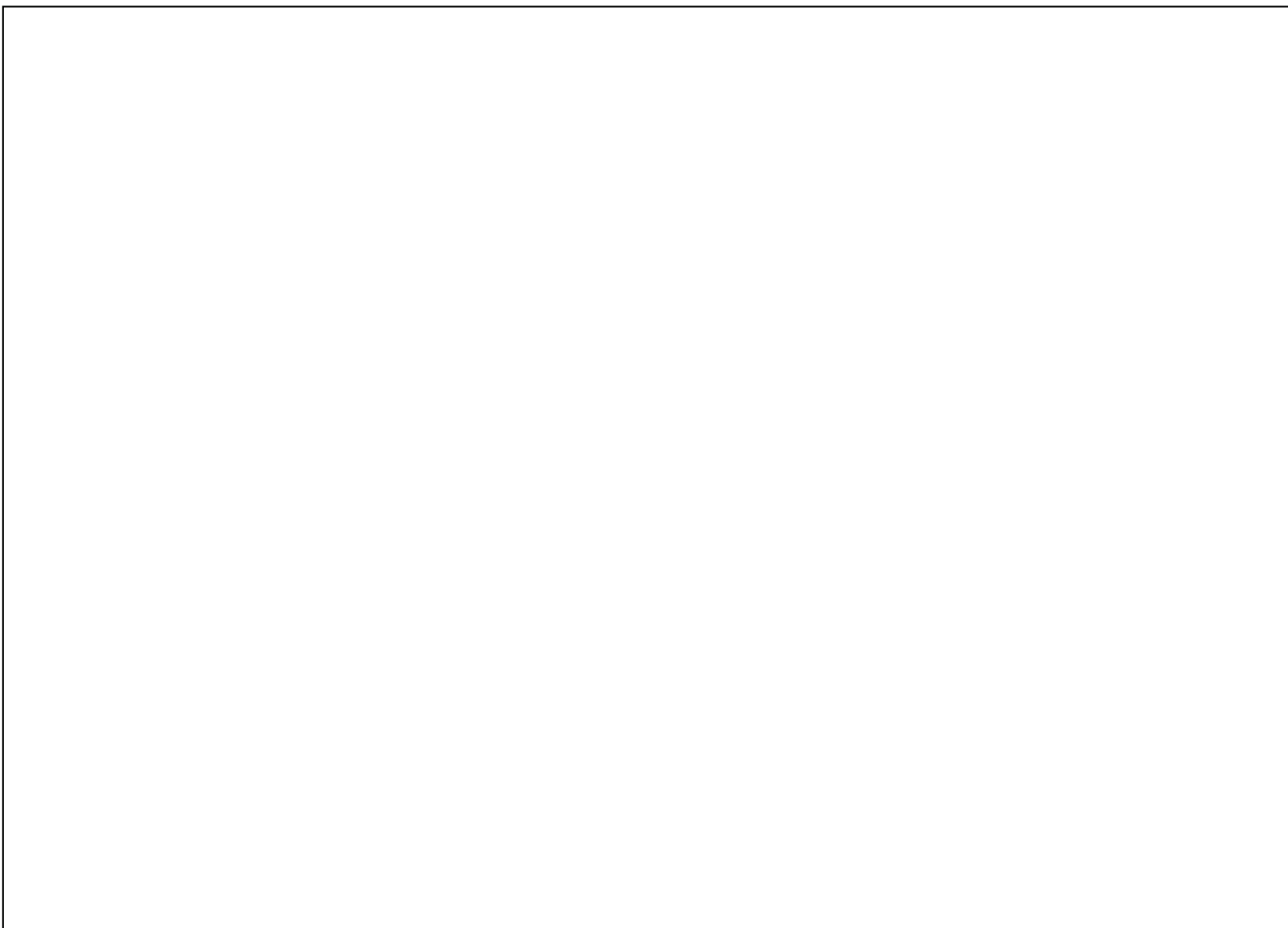


eVue
Anywhere









People of a laundry

Operator



eVue
LABOR

Maintenance



eVue
CONTROL



Production



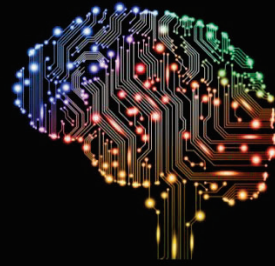
eVue
METRICS

eVue
Anywhere

Director



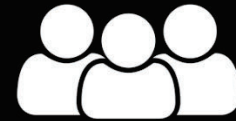
eVue
Anywhere



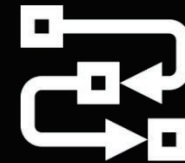
Maximize Equipment

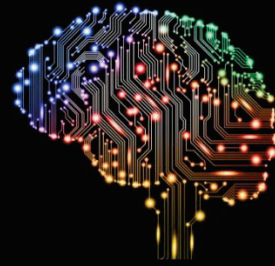


Maximize People



Maximize Production Flow

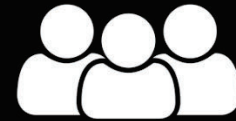




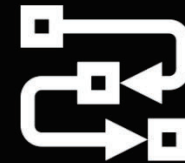
Maximize Equipment



Maximize People



Maximize Production Flow



[Sign up](#)[Log in](#)






Playlist

Rock Classics 🎸🤘 Classic Rock from 60s, 70s, 80s and 90s. - Klassisk Rock

Rockmusik vi minns med världens bästa rocklåtar i en mix av klassiska låtar från legendarer som Queen, AC/DC, Toto, Journey, Led Zeppelin, KISS, Van Morrison, Black Sabbath, Tom Petty, Scorpions, David Bowie, Bruce Springsteen and more.

 **Digster Sweden** • 4,736 likes • 200 songs, about 14 hr

List 

| # | Title | Album | Date added | |
|---|---|---|-------------|------|
| 1 |  Another One Bites The Dust - Remastered 2011 Queen | The Game (2011 Remaster) | Dec 6, 2022 | 3:34 |
| 2 |  Smells Like Teen Spirit Nirvana | Nevermind (Remastered) | Dec 6, 2022 | 5:01 |
| 3 | Enter Sandman Metallica | Metallica | Dec 6, 2022 | 5:31 |
| 4 |  We Will Rock You - Remastered 2011 Queen | News Of The World (Deluxe Remastered Version) | Dec 6, 2022 | 2:02 |
| 5 |  Heaven's On Fire KISS | Animalize | Dec 6, 2022 | 3:21 |
| 6 |  Three Little Birds Bob Marley & The Wailers | Exodus (Deluxe Edition) | Dec 6, 2022 | 3:00 |



75%

One Person Making Most Important Decision In The Plant



No Control or Visibility
Send too much or little
Push instead of pull
Abandoned equipment
Reactive (Getting Yelled At)



THERE MIGHT BE A BETTER WAY.

#SVU





Introducing eVue AUTOPILOT

A laundry is different every day, yet the industry standard for production scheduling is static production lists. These lists work initially, but soon become irrelevant and 75% of our customers turn them off. The laundry then resorts to manually selecting what to wash sling to sling, often by an untrained operator who now is making the most critical decision in the plant. This leads to sending too much or too little to clean equipment, backing up dryers, abandoned equipment, and most critically, the inability to meet the orders of the day. The laundry experts on the eVue team believed something better was possible.

Questions that eVue AUTOPILOT considers when making decisions :

- *Do we need this to meet the afternoon orders?*
- *Is this a good decision for the clean equipment?*
- *Is it a good decision for the dryers?*

eVue Autopilot automatically sequences production throughout the plant based on current demand and the real-time state of the system. It can integrate directly with the laundry's route accounting system to pull in real-time requirements and delivery information to achieve your daily order fulfillment goals.

© 2020 KANNEGIESSER ETECH ALL RIGHTS RESERVED.

MAXIMIZING THE PRODUCTION WORKFLOW THROUGHOUT THE PLANT

eVue Autopilot always makes the best decision for your plant. All laundries with eVue 6 are capable of getting eVue Autopilot. It is one of the more advanced applications to the eVue PRO subscription platform.



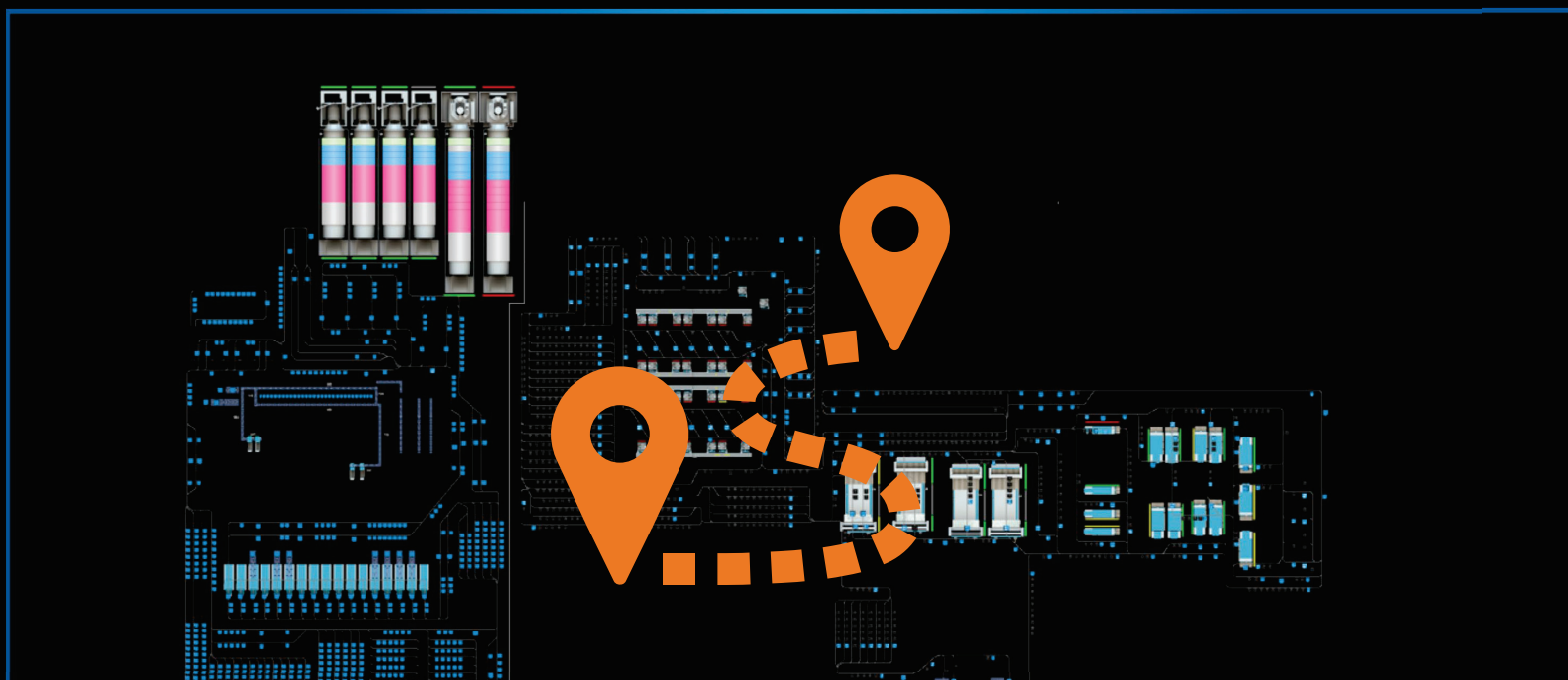
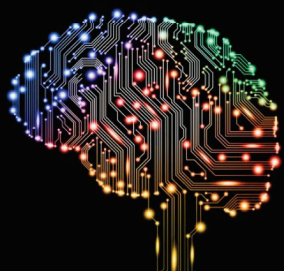
eVue AUTOPILOT KNOWS WHERE YOUR ITEMS ARE LOCATED THRUOUT THE LAUNDRY AND BUILDS AN ITEM SCORE BASED ON A RANK OF THE NEED TO FULFILL YOUR DAILY ORDERS.

eVue Autopilot AUTOPILOT DASHBOARD

Dashboard Widgets: DASHBOARD, WASHES, SLP ASSIGNMENTS, CATEGORIES CONFIGURATION

Sort Classifications RANKED BY NEED

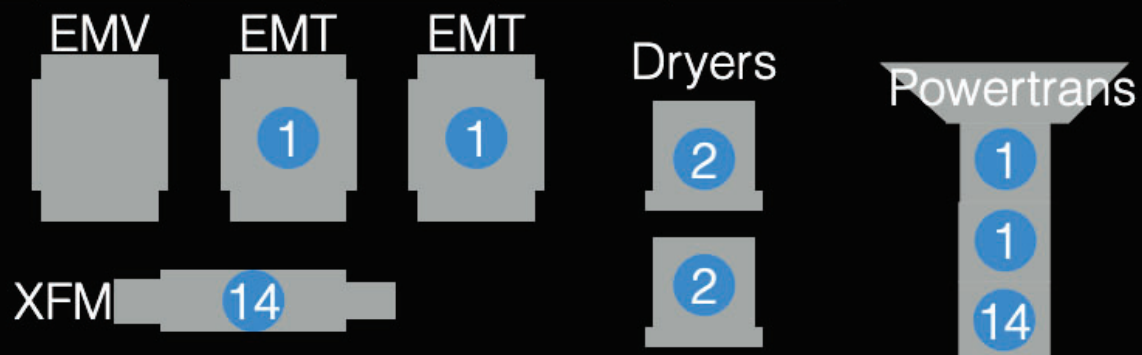
| Sort Classification | Image | AutoPilot Score | Sorted Storage | Washing/Drying | Finishing | Washed | Daily Requirement |
|---------------------|-------|-----------------|----------------|----------------|-----------|-----------|-------------------|
| BATH BLANKET | | | 24 SLKMS | 4 SLKMS | 19 SLKMS | 13803 LRS | 11962 LRS |
| HAPPER/BLUE FOL | | | 0 SLKMS | 0 SLKMS | 0 SLKMS | 222 LRS | 0 LRS |
| THERMALS | | | 0 SLKMS | 2 SLKMS | 6 SLKMS | 7486 LRS | 4743 LRS |



| Product | Required | Complete | % | Location | PPS |
|------------------|----------|----------|-----|----------|------|
| 1 - Flat Sheets | 32,000 | 25,600 | 80 | EMT | 1000 |
| 2 - Draw Sheets | 2,000 | 2,000 | 100 | EMT | 1000 |
| 8 - Pillow Cases | 11,000 | 5,500 | 50 | EMV | 2400 |
| 14 - Underpads | 21,000 | 21,500 | 100 | XFM | 700 |

Soiled Storage

| | | |
|---|---|----|
| 1 | 1 | 1 |
| 8 | 8 | 14 |
| 2 | 2 | 2 |



Eliminate Some Choices

Do I Need This?

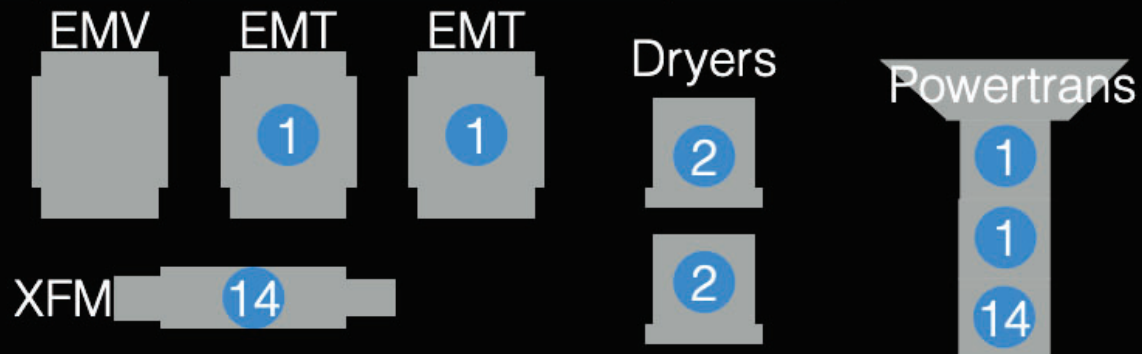
Is it a good fit for the clean side?

Is it a good fit for the dryers?

| Product | Required | Complete | % | Location | PPS |
|------------------|----------|----------|-----|----------|------|
| 1 - Flat Sheets | 32,000 | 25,600 | 80 | EMT | 1000 |
| 2 - Draw Sheets | 2,000 | 2,000 | 100 | EMT | 1000 |
| 8 - Pillow Cases | 11,000 | 5,500 | 50 | EMV | 2400 |
| 14 - Underpads | 21,000 | 21,500 | 100 | XFM | 700 |

Soiled Storage

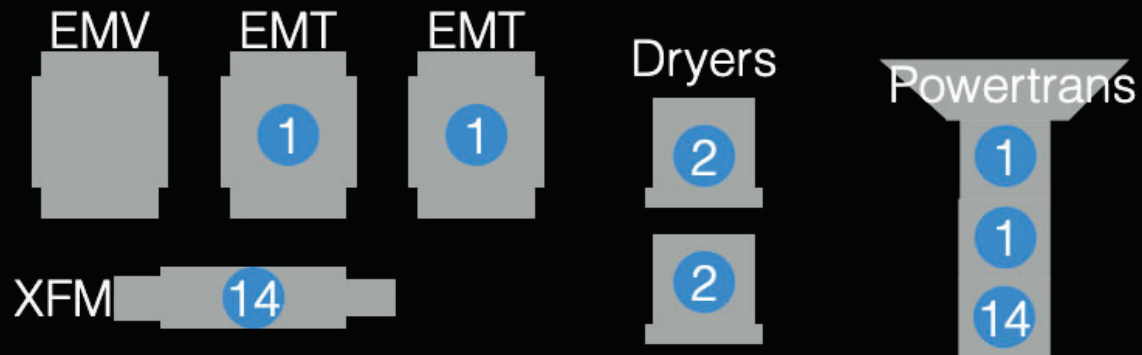
| | | |
|--------------|--------------|--------------|
| 1 | 1 | 1 |
| 8 | 8 | 14 |
| 1 | 1 | 1 |



| Product | Required | Complete | % | Location | PPS |
|------------------|----------|----------|-----|----------|------|
| 1 - Flat Sheets | 32,000 | 25,600 | 80 | EMT | 1000 |
| 2 - Draw Sheets | 2,000 | 2,000 | 100 | EMT | 1000 |
| 8 - Pillow Cases | 11,000 | 5,500 | 50 | EMV | 2400 |
| 14 - Underpads | 21,000 | 21,500 | 100 | XFM | 700 |

Soiled Storage

| | | |
|---|---|----|
| 1 | 1 | 1 |
| 8 | 8 | 14 |
| X | X | X |



Sort Classifications
RANKED BY NEED

| Sort Classification | Image | AutoPilot Score | Soiled Storage | Washing/Drying | Finishing | Washed | Daily Requirement |
|---------------------|---|---|----------------|----------------|-----------|---------|-------------------|
| DRAW SHEETS |  | <div><div></div><div></div><div></div><div></div><div></div><div></div><div></div><div></div><div></div><div></div></div> | 8 SLINGS | 0 SLINGS | 0 SLINGS | 503 LBS | 1365 LBS |

DRAW SHEETS ORDER FULFILLMENT
By Route



AUTOPILOT SCORE



IRONERS 1 & 2
Available Work




AUTOPILOT SCORE

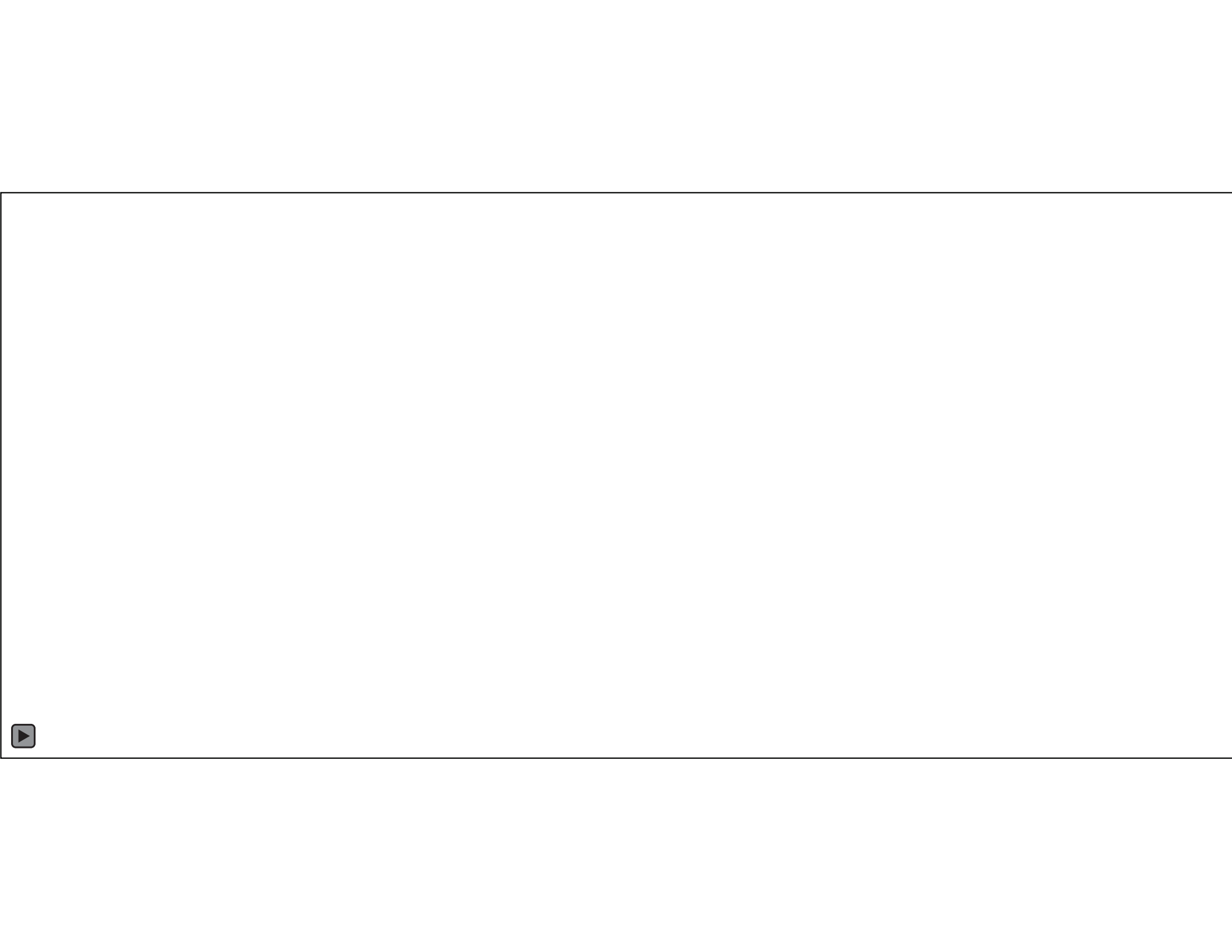
3.4 HOURS OF WORK

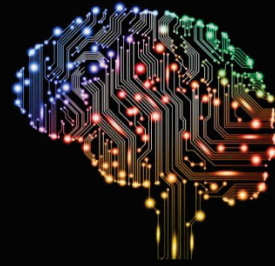
6.0 TARGET HOURS



A woman with a large, dark, curly afro hairstyle is singing into a microphone. She is wearing a dark jacket over a dark top. The background is a stage with blue lighting and several bright, out-of-focus spotlights. The text "If I could turn back time" is overlaid at the bottom in a yellow, italicized font with a black outline.

If I could turn back time





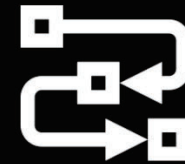
Maximize Equipment

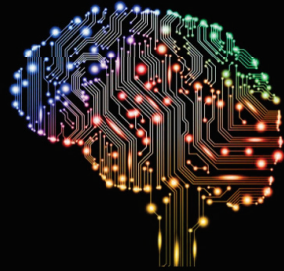


Maximize People



Maximize Production Flow





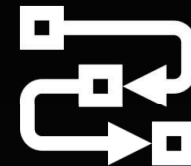
Maximize Equipment



Maximize People



Maximize Production Flow



Maximize Robots





To have the *right linen*,
at the *right time*,
reliably,
and with *minimal effort*,
at the *right customer*.

GOAL

Navigating *the* Future



Kannegiesser®
ETECH

with **Robotics** and **AI**